

# Actuator

## GD70



## Features

- ◆ GD70 is a strong and powerful actuator designed for use in furniture, especially for application having side load on actuator, such as get-up chair or recliner. There are many types of control boxes compatible with GD70 which are available for customers to choose.
- ◆ Main applications : Furniture, homecare.
- ◆ Input voltage : 24V DC
- ◆ Max. load : 7000N (push) / 5000N (pull)
- ◆ Max. current : 3.2A @ 24V DC
- ◆ Max. speed at no load : 7.7mm/sec
- ◆ Max. speed at full load : 2.9mm/sec @ 7000N
- ◆ Stroke : 50 ~ 300mm
- ◆ Duty cycle : 10% or 2 min continuous operation in 20 min.
- ◆ IP Protection level : IP43
- ◆ Color : Black
- ◆ Noise Level :  $\leq 50$ dB
- ◆ Preset limit switches

## Options

- ◆ Positioning signal feedback with Hall effect sensor x 1
- ◆ Positioning signal feedback with Hall effect sensor x 2
- ◆ Safety nut
- ◆ Push only

## Compatibility

### 1. Control box

T control, TR11, TL01, CS1, CB4M

### 2. Handset

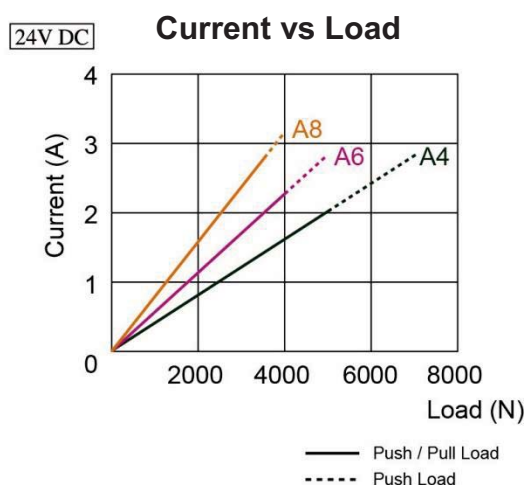
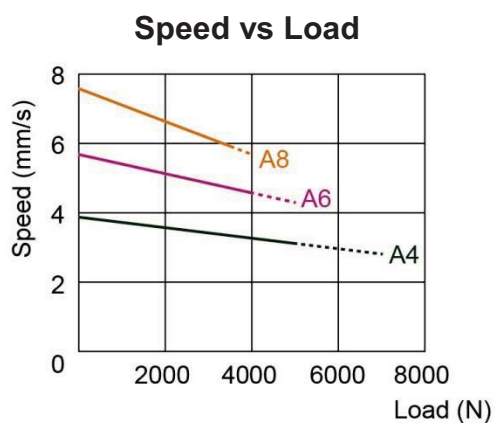
HA, HC, HD, HJ, HK, HM, H2N, H3N

### 3. Accessory

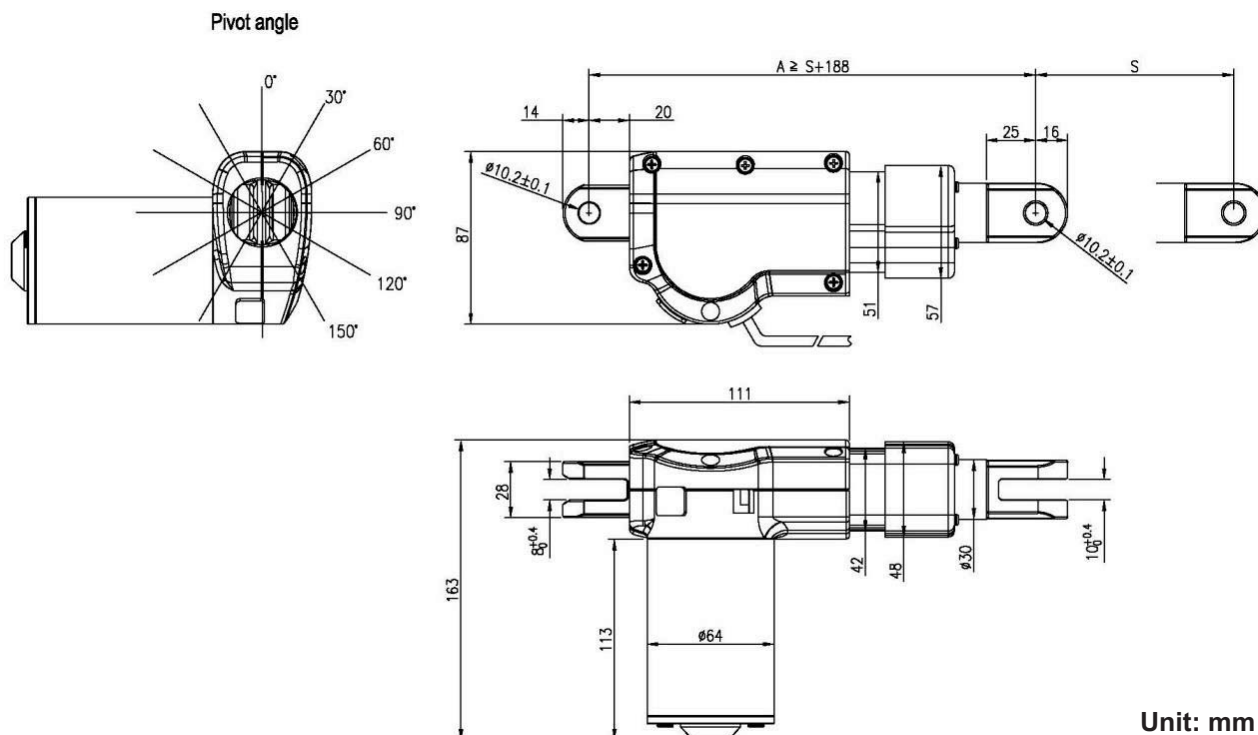
None

## Performance Data

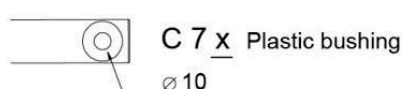
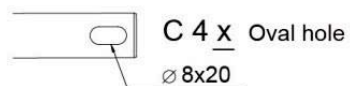
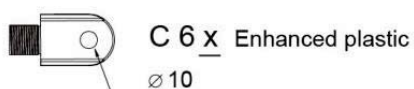
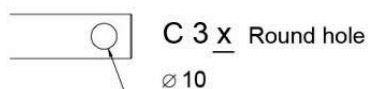
Model No.	Push Max. (N)	Pull Max. (N)	Speed (mm/s)		Current (A) @ 24V DC	
			No load	Full load	No load	Full load
GD70-XX-A4- XXX.XXX	7000	5000	3.9	2.9	0.3	2.8
GD70-XX-A6- XXX.XXX	5000	4000	5.8	4.2	0.3	2.8
GD70-XX-A8- XXX.XXX	4000	3500	7.7	5.7	0.3	3.2



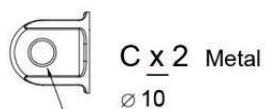
# Dimensions



## ◆ Front Connector



## ◆ Rear Connector



## ◆ Available stroke (S) range = 50~300mm

## ◆ Retracted length (A)

Front connector	C3x / C7x	C4	C6
Standard	$A \geq S+150$ mm	$A \geq S+160$ mm	$A \geq S+180$ mm
Option of Safety nut	Additional 8mm is required		
Option of Push only	Additional 10mm is required		

## ◆ Extended length = S+A

# Ordering Key

GD70—□□—□□—□□□.□□□—C□□—□□□

## Input Voltage

24 : 24V DC

## Motor and Spindle Type

A4, A6, A8

(Refer to Performance Data)

## A : Retracted Length

(Refer to paragraph Dimensions)

## B : Extended Length

(Refer to paragraph Dimensions)

## Front Connector

3 : Round hole

4 : Oval hole

6 : Enhanced plastic

7 : Plastic bushing

## Rear Connector

2 : Metal

## Option

HS : Hall effect sensor x 1

HS2 : Hall effect sensor x 2

SN : Safety nut

PO : Push only



北京泰瑞恩商贸有限公司  
Beijing Torion Trading Co.,Ltd.

Tel:13801253818 Fax:010-84067150  
www.torion.cn sales@torion.cn